



Characteristics

Recessed Compact air curtain, intended for installation in false ceilings. With Kleenfan photocatalysis technology that disinfects and purifies the air, specially designed for commercial doors.



Air Disinfection Performance



- Kleenfan technology with photocatalytic purificant action fans. UV-A rays, from the long-life led, act on the titanium dioxide of the turbine generation Reactive Oxygen Species (ROS) than, through oxidation /reduction reactions, inactivate wide range of pathogenic microorganisms (viruses and bacteria). It mineralizes most of the pollutants present in urban areas produced by vehicles and industry (NOx, SOx, COx, formaldehydes, VOCs, etc.).
- Compact and low profile air only recessed air curtain, with full grille view, specially designed for applications without heating.
- Self-supporting casing construction made of galvanized steel plate, ready to be installed recessed in a false ceiling.
- Inlet grille (free of maintenance) made with aluminium profiles and blow-out nozzle, integrated in a single white frame colour RAL 9016. Other colours are available on request.
- Anodized aluminium outlet vanes, airfoil shaped
- EC Double-inlet centrifugal fans driven by an external rotor motor and low noise level, with very low consumption efficiency fans.
- "A" type without heating, air only.
- Includes Plug&Play control with 7m RJ45 cable and infrared remote control. Optional: Clever control (programmable, automatic, intelligent, energy saving, Modbus RTU for BMS...)

Specifications

50Hz

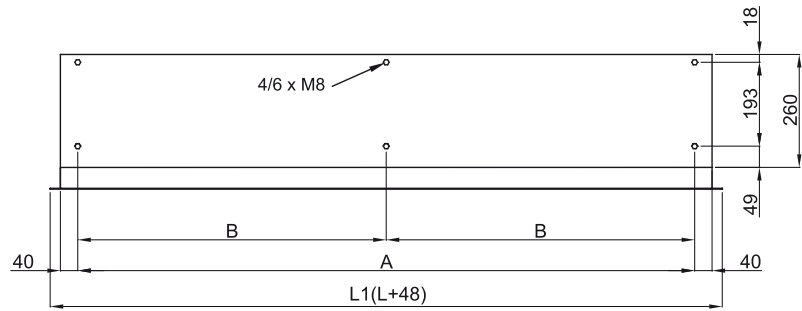
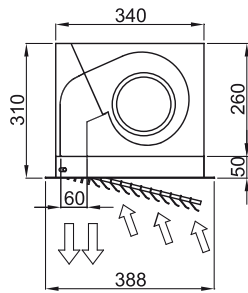
Model	Unheated	
	Nominal Airflow (m³/h)	Recommended Installation Height (m)
CR ECM 1000 A FC	1840	2,5-3,8
CR ECM 1500 A FC	2760	2,5-3,8
CR ECM 2000 A FC	3680	2,5-3,8
CR ECM 2500 A FC	4600	2,5-3,8
CR ECG 1000 A FC	2700	3-4,2
CR ECG 1500 A FC	3600	3-4,2
CR ECG 2000 A FC	5400	3-4,2
CR ECG 2500 A FC	6300	3-4,2

60Hz

Model	Unheated	
	Nominal Airflow (m³/h)	Recommended Installation Height (m)
CR ECM 1000 A FC	1840	2,5-3,8
CR ECM 1500 A FC	2760	2,5-3,8
CR ECM 2000 A FC	3680	2,5-3,8
CR ECM 2500 A FC	4600	2,5-3,8
CR ECG 1000 A FC	2700	3-4,2
CR ECG 1500 A FC	3600	3-4,2
CR ECG 2000 A FC	5400	3-4,2
CR ECG 2500 A FC	6300	3-4,2



Dimensions



L	L1	A	B
1000	1048	920	-
1500	1548	1420	710
2000	2048	1920	960
2500	2548	2420	1210

