



Model 88S High Speed One

Ultra High Speed Marking and Coding Applications.

Canning, Bottling, Wire and Cable Manufacturing.

bestCode
continuous innovations

Print real-time “Best By,” “Lot Code,” “Sell by,” “Expiration Codes” and other identifying marks and codes to any substrate.

The Model 88S High Speed One prints fast, high quality single and twin line codes, barcodes and graphics on the highest speed bottling, canning, wire/cable production lines.

A complete range of specialized inks for glass bottles, returnable bottles, wet glass bottle coding, plastics, metal, thermo-sensitive color change inks and more. Ink dries in a second and can be permanent or removable with caustic solutions or water as required.

Typical applications mark and code one, two or three shifts per day or 24/7 operations, five to seven days per week, averaging 4,000 - 8,760 hour annual operation. Utilize integrated RS232 and programmable inputs/outputs for remote control and communications.



PRINT CAPABILITIES

LINES OF PRINT—1, or 2 lines of text, graphics and barcodes.

IMAGE HEIGHT—from .06" (1.5 mm) to .50" (12 mm).

NON-CONTACT PRINTING—ink throw distances from .5" (12 mm) up to 1" (25 mm).

PRINT SPEEDS—up to 2000 feet/minute (600 meters/minute) for single line of print, up to 500 feet/minute (150 meters/minute) for two lines of print.

Systems are simplified to allow anyone to operate, minimizing operator touches, extending time between human interaction.

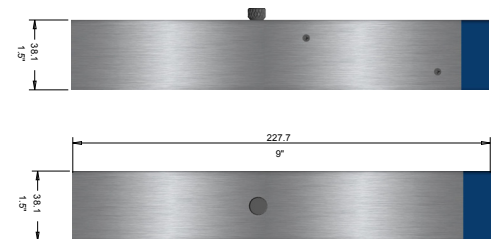
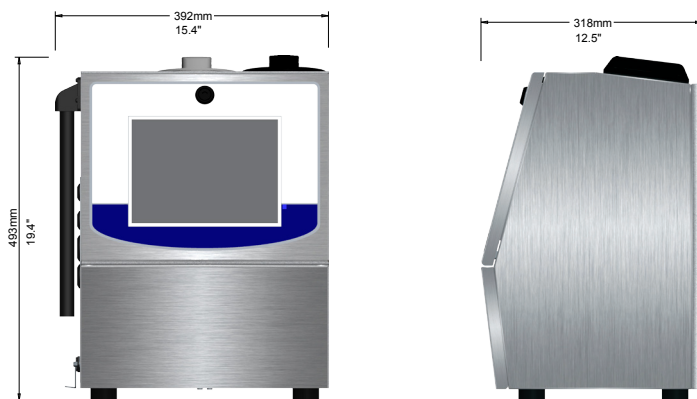
- **CleanStart™**—automatically cleans printhead eliminating daily and weekly cleanings.
- **10.4" Color Touch Screen**—always on, vivid display with large intuitive buttons and status indicators.
- **OneTouch™**—single step operator functions reduce operator steps.
- **Large Volume Ink Tanks**—extend time between fluid additions to weeks or months.
- **On-the-Fly External Ink Filling**—accomplished in less than a minute with no waste.
- **AutoOff™ Go Home Button**—automate and eliminate time consuming end of day manual routines.

**THE CLOSER YOU LOOK,
THE BETTER BESTCODE LOOKS!**



Model 88S High Speed One Specifications

| | |
|-------------------------|---|
| Technology | Continuous Ink Jet (CIJ) Technology, Single Printhead Control |
| User Interface | 10.4" (264 mm) Color LCD, Touch Screen, Icon based – Graphical User Interface (GUI) |
| Lines of Print | 1 - 2 Lines, 16 Pixel |
| Print Fonts | 5, 7, 9, 12, 16 |
| Adjustable Print Height | .06" (1.5 mm) - .50" (12 mm) |
| Print Speed | 1 Line: 2000 feet/minute (600 meters/minute), 2 Line: 500 feet/minute (150 meters/minute) |
| Ink Throw Distance | True Non-Contact Printing, .5" (12 mm) - 1" (25mm) |
| Electronic Hardware | 32 Bit ARM 9, 208 Mhz Processor |
| Memory Storage | 4 GByte Solid State Drive, 15 MByte Flash, 128 Mbyte RAM, USB Interface (thumb drive) |
| Machine Interface | RS232, Ethernet |
| Inputs | 1 Photocell, 1 Photocell or Programmable Input, 1 Shaft Encoder, 8 Field Programmable Inputs, Remote Message Selection option – 256 possible selections |
| Outputs | 4 Alarm Outputs, 1 Relay Output |
| Enclosure | Stainless Steel Enclosure |
| Ingress Protection | IP65 |
| SmartFilter™ Life | 10,000 hours |
| Operating Environment | Temperature: 32° - 122° F (0°- 50°C), % Relative Humidity: 10 - 90% (non-condensing) |
| Electrical Requirements | Auto Ranging: 100 - 240 VAC (3 Amp), Frequency 50 - 60 Hz, Power Consumption: 50 W |
| Compliance | CE Certified, RoHS Compliant |
| Message/Code Creation | Dynamic Message Storage (over 1000 Messages), WYSIWYG Message Editing, Drag/Drop Field Based Formatting, Multi-National (Unicode) Character Printing, Download Fonts, Integrated Font Editor, Real and Expiration Time and Date, Shift and Rollover Functions, Product and Batch Counting, Remote Count Resets, Download Graphics and Integrated Graphic Editor, Continuous and Repeat Print, Auto Reverse / Traverse Print |
| Operation Features | Icon Based Operation, Single Button Start, Single Button Stop / Power Off, Password Security, Automatic Diagnostics, Error and Activity Logs, Service Reminders, Backup / Restore Functions, USB Load Firmware Updates, All Operator Languages, Download Languages |
| Ink Delivery | SmartFill™ Ink Bottle: 32 oz (946 ml), SmartFill™ Makeup Bottle: 32 oz (946 ml) |
| Fluid Capacity | Ink Capacity: 68 oz (2 liters), Makeup Capacity: 102 oz (3 liters) |
| Ink Types | Quick Dry to Immediate, Complete Ink Range: MEK, Acetone, Ethanol and Blends |
| Ink Colors | Black, Red, Blue, Green, Yellow, Orange, Invisible |
| Specialist Inks | Thermo Color Change, Wet Bottle, Caustic Washable, Plastic, Eco-Friendly, Alcohol Resistant, Military Spec |
| Printhead Umbilical | 10 feet (3 meters), 15 feet (4.5 meters) option |
| Printhead Options | Right Angle Printhead |
| Printing | Printhead Orientation – Omnidirectional |
| Weight | 45 lbs (20 kg) |
| Optional Accessories | Alarm Beacon, Photocells, Mountings, Shaft Encoder, AirFlow™ Positive Air Kit (for high dust), Printhead Wash Station |



By request, BestCode can adapt hardware and software to meet specific application demands.

t. 817.349.8555 | f. 817.349.8480 | info@bestcode.co | www.bestcode.co

©2011-2017 BestCode. Designed and Manufactured by BestCode in Texas, USA
BestCode and Continuous Innovations are trademarks of BestCode. BestCode reserves the right to change specifications without notice.

bestCode
continuous innovations

