



**Characteristics**



- Kleenfan technology with photocatalytic disinfectant action fans. UV-A rays, from the long-life LED, act on the titanium dioxide of the turbine generating Reactive Oxygen Species (ROS) that, through oxidation / reduction reactions, deactivate a wide range of pathogenic microorganisms (viruses and bacteria). It mineralizes most of the pollutants present in urban areas produced by vehicles and industry (NOx, SOx, COx, formaldehydes, VOCs, etc.).
- Self-supporting casing construction made of galvanized steel plate, finished in structural epoxy-polyester painting white colour RAL9016 as standard. Other colours or stainless steel are available on request.
- Micro-perforated inlet grille with filter functions and easy service. It does not need prefilter.
- Anodized aluminium outlet vanes, airfoil shaped, adjustable from 0 to 15° each side.
- Double-inlet EC centrifugal fans driven by an external rotor motor with very low consumption and noise level. 5-speed selector.
- “P” type with water heated coil. “E” type with electrical shielded elements, three stages with integrated regulation. “A” type without heating, air only. “DX” with direct expansion coil, consult.
- Includes Plug&Play control with 7m RJ45 cable and infrared remote control. Optional: Clever control (programmable, automatic, intelligent, energy saving, Modbus RTU for BMS...).

**Specifications**

**AIR ONLY**

Model	Airflow m <sup>3</sup> /h	Power Fans	Current Fans	Noise Level	Weight kg
		230V-50Hz kW	230V-50Hz A	(5m) dB(A)	
ECM 1000 A FC	1840	0,142	1,24	56	31
ECM 1500 A FC	2760	0,213	1,86	57	46
ECM 2000 A FC	3680	0,284	2,48	58	58
ECM 2500 A FC	4600	0,355	3,10	59	72
ECM 3000 A FC	5520	0,426	3,72	60	86
ECG 1000 A FC	2700	0,213	1,86	61	43
ECG 1500 A FC	3600	0,284	2,48	62	51
ECG 2000 A FC	5400	0,426	3,72	63	80
ECG 2500 A FC	6300	0,497	4,34	64	84
ECG 3000 A FC	7200	0,568	5,96	65	95

**ELECTRICAL HEATED**

Model	Airflow m <sup>3</sup> /h	Electrical Heating Capacity	Power Fans	Current Fans	Noise Level	Weight kg
		400Vx3-50Hz kW	230V-50Hz kW	230V-50Hz A	(5m) dB(A)	
ECM 1000 E FC	1840	3/6/9	0,142	1,24	56	37
ECM 1500 E FC	2760	4/8/12	0,213	1,86	57	57
ECM 2000 E FC	3680	6/12/18	0,284	2,48	58	75
ECM 2500 E FC	4600	6/12/18	0,355	3,10	59	94
ECM 3000 E FC	5520	8/16/24	0,426	3,72	60	112
ECG 1000 E FC	2700	5/10/15	0,213	1,86	61	52
ECG 1500 E FC	3600	7,5/15/22,5	0,284	2,48	62	63
ECG 2000 E FC	5400	10/20/30	0,426	3,72	63	100
ECG 2500 E FC	6300	10/20/30	0,497	4,34	64	106
ECG 3000 E FC	7200	10/20/30	0,568	5,96	65	120

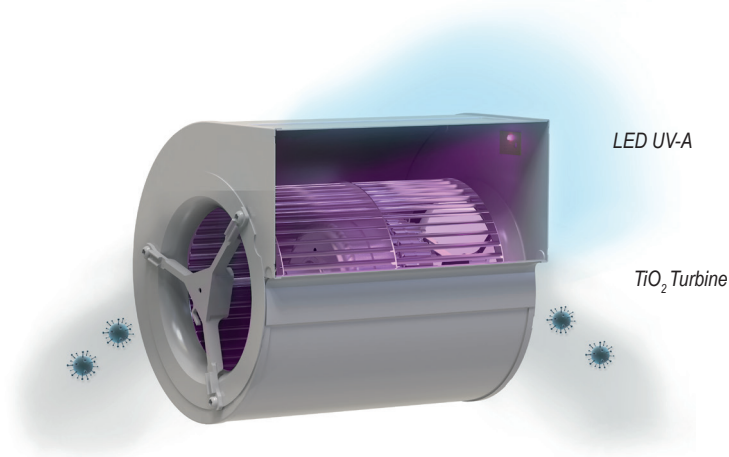
**WATER HEATED**

Model	Airflow m <sup>3</sup> /h	P86		P64		P54		Power Fans 230V-50Hz kW	Current Fans 230V-50Hz A	Noise Level (5m) dB(A)	Weight kg
		Heating Capacity	Water Drop Pressure	Heating Capacity	Water Drop Pressure	Heating Capacity	Water Drop Pressure				
		80/60°C kW	80/60°C Pa	60/40°C kW	60/40°C Pa	50/40°C kW	50/40°C Pa				
ECM 1000 P FC	1720	9,38	920	8,77	4560	8,74	1280	0,142	1,24	56	35
ECM 1500 P FC	2580	14,58	790	14,02	6730	14,71	4690	0,213	1,86	57	53
ECM 2000 P FC	3440	21,12	2010	18,70	4990	19,13	2150	0,284	2,48	58	69
ECM 2500 P FC	4300	27,53	3960	23,33	4010	24,95	4230	0,355	3,10	59	86
ECM 3000 P FC	5160	33,99	6860	29,05	7050	30,54	5920	0,426	3,72	60	103
ECG 1000 P FC	2550	11,89	1400	11,27	7110	11,50	2090	0,213	1,86	61	50
ECG 1500 P FC	3400	17,29	1070	16,77	9240	17,86	6620	0,284	2,48	62	59
ECG 2000 P FC	5100	26,86	3080	24,14	7850	25,24	3530	0,426	3,72	63	92
ECG 2500 P FC	5950	33,63	5650	28,84	5840	31,38	6360	0,497	4,34	64	96
ECG 3000 P FC	6800	40,34	9290	34,81	9710	37,16	8400	0,568	5,96	65	109

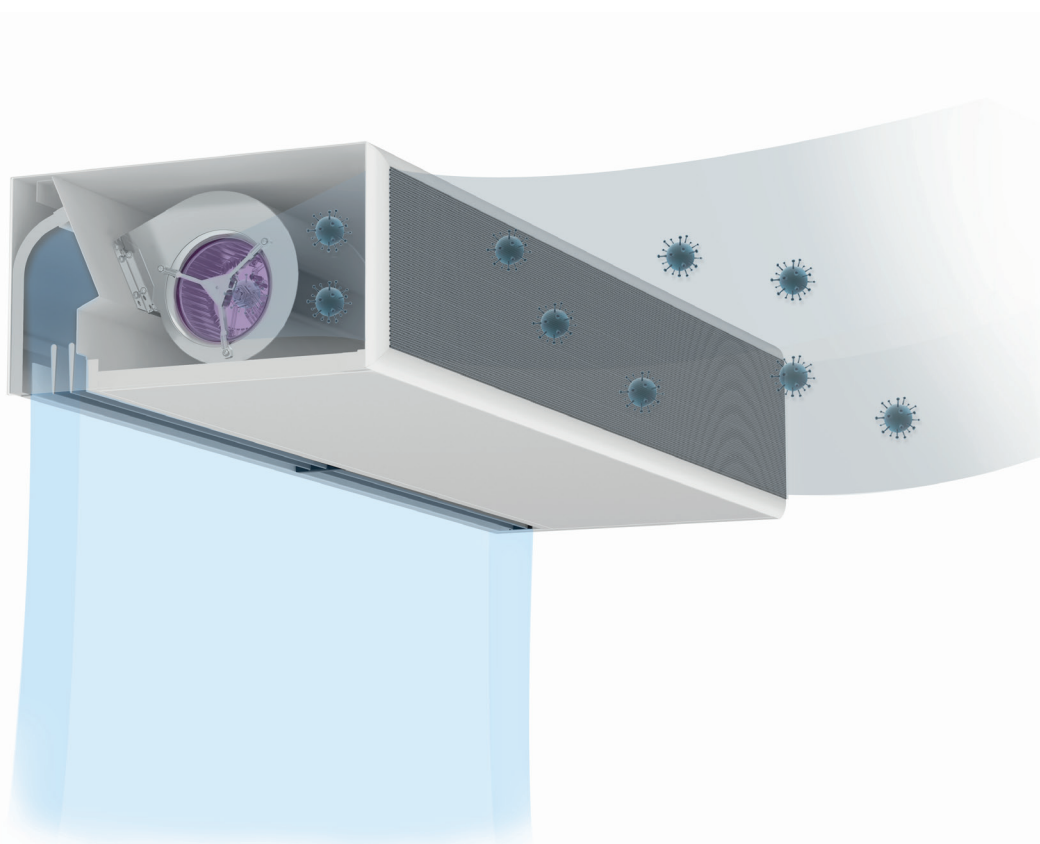
Water heated: connection pipes P86 and P64 are 2x3/4" female (male if lateral pipes), P54 2x1" male. P86 2 rows coil, P64 3 rows coil, P54 4 rows coil.



Kleenfan Technology with Photocatalysis

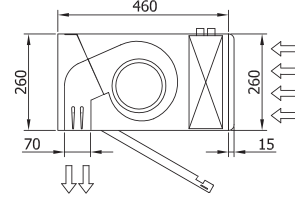
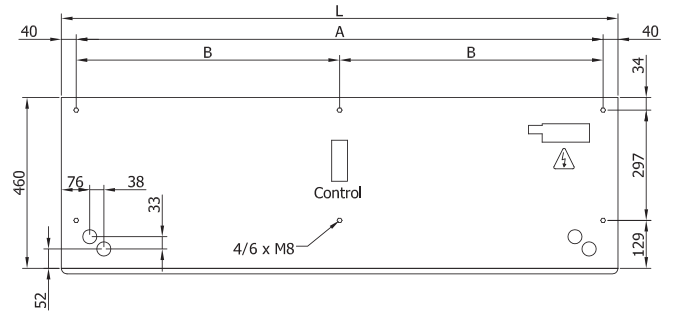
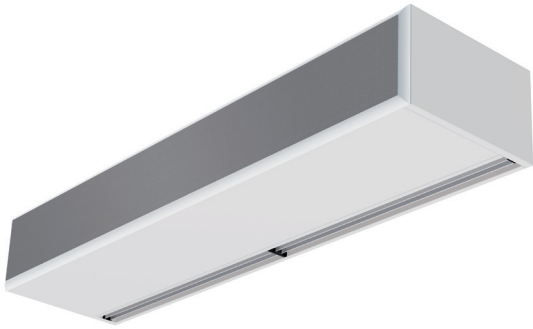


- Kleefan technology with photocatalytic disinfectant action fans.
- Photocatalysis starts from the natural principle of decontamination of nature itself. It is a natural phenomenon that, mimicking photosynthesis, accelerates a photoreaction through the action of light on a catalyst.
- UV-A rays, from the long-life LED, act on the titanium dioxide in the turbine generating Reactive Oxygen Species (ROS) that cause advanced oxidation processes (AOP), deactivating a wide range of pathogenic microorganisms (viruses and bacteria).
- This catalytic reaction produces oxidation reactions in organic compounds and reduction in inorganic ones, in addition to significantly reducing suspended particles.
- Mineralizes most of the pollutants present in urban areas produced by vehicles and industry (NO<sub>x</sub>, SO<sub>x</sub>, CO<sub>x</sub>, formaldehydes, VOCs, etc.).



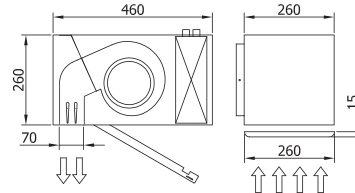
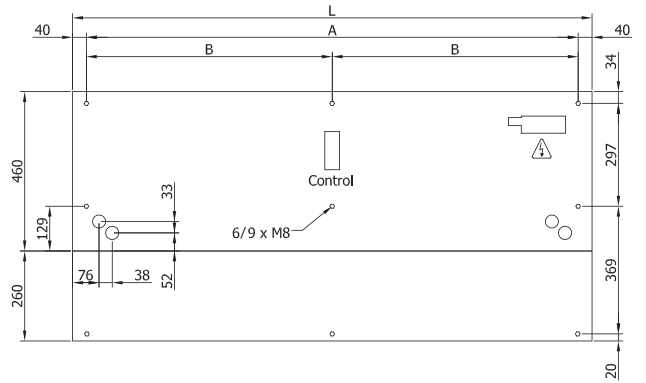


Layouts and dimensions



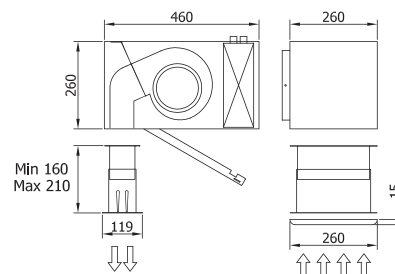
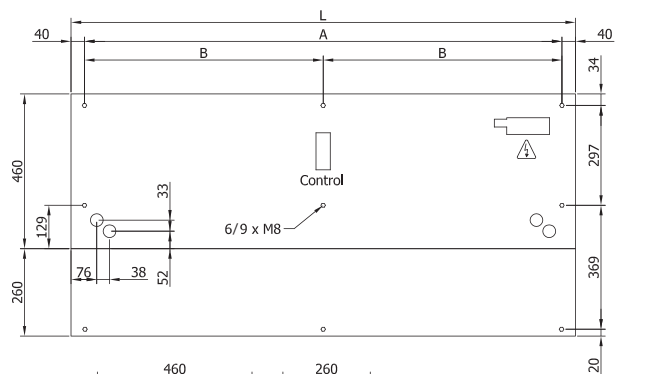
L	A	B
1000	920	-
1500	1420	710
2000	1920	960
2500	2420	1210
3000	2920	1460

Free hanging mounting



L	A	B
1000	920	-
1500	1420	710
2000	1920	960
2500	2420	1210
3000	2920	1460

Inside ceiling surface mounting



L	A	B
1000	920	-
1500	1420	710
2000	1920	960
2500	2420	1210
3000	2920	1460

False ceiling invisible mounting